

NEVER THE SAME TWICE – REVERSIBLE JACKET

by Mary Ann Donze - Anna Claire Originals
11683 ©2002 INDYGO JUNCTION, INC.

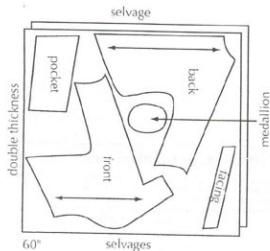
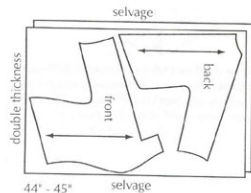
INTRODUCTION

RST = Right Sides Together

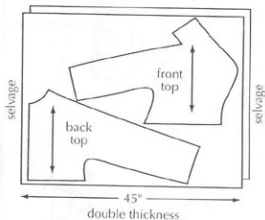
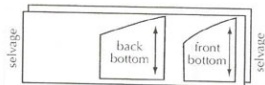
This jacket is fully reversible but for instructional purposes we will refer to the "jacket" and the "lining" for clarity. Use your imagination in assembling this jacket and have fun. It is a flattering cut which looks great when made with a funky blend of vintage fabrics and buttons or quite elegant constructed of velvet and satin with a rhinestone closure. Using wools and chenille it can be very warm for winter wear or a spring weight using cottons, linens, silks, etc. The possibilities are endless.

Please follow directions carefully and do not omit stay stitching.

Layouts for Jacket



Layouts for Split Jacket



MATERIALS NEEDED

- Fabric for Basic Jacket - 3 1/3 yards of 45" or 3 1/4 yards of 60"
- Lining - Use same amount of contrasting fabric as used for jacket
- Split Jacket Fabric - 2 yards for jacket top
- 7/8 yard for jacket bottom
- Pocket option - 1/3 yard of contrasting fabric. May be cut from remaining jacket yardage if desired. Two large buttons will also be needed for the pocket option. If desired for stability interfacing may be applied to the pocket facing. You will need a 4" x 17" piece.
- Quilted medallion option - a small oval of fabric in desired size, a piece of cotton batting the same size as medallion, a piece of lightweight interfacing the same size as medallion.
- Applique option - a rectangle or square of contrasting fabric in desired size.
- Front inset option - A piece of contrasting fabric 18" x 9 1/2"
- Two large buttons for jacket closure OR belt buckles. We used vintage coat buttons and a vintage buckle.
- Thread to match