

AUDREY'S AFTERNOON DRESS

IJ834

With 3/4 length set-in raglan sleeves, this classic a-line style pullover can be worn as a tunic or a dress. Darts at the bust-line help give this dress a more feminine style. Instructions include how to trim the exposed edges with coordinating bias binding around the neckline, hem of sleeve and optional pockets. The bias detailing around the neck doubles as the elastic casing. Or simply roll the neckline hem to achieve casing. Sizes S-2XL

Materials Needed:

FOR BOTH VIEWS:

For all sizes: 1 1/2 yards of 1/4" wide elastic

VIEW A: For 45" wide fabric:

Sizes S, M, L: 2 7/8 yards
Sizes XL, 2XL: 3 yards

VIEW A: For 60" wide fabric:

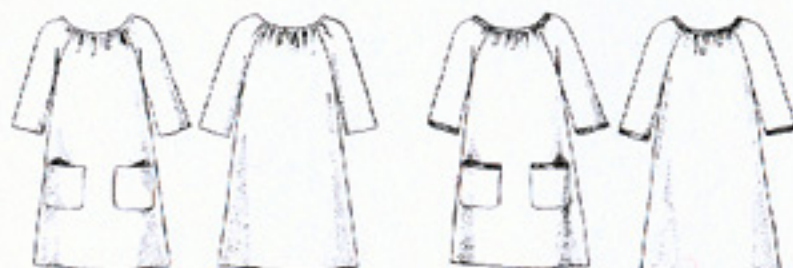
Size S: 1 3/4 yards
Size M: 1 7/8 yards
Size L: 2 3/8 yards
Sizes XL, 2XL: 2 1/2 yards

VIEW B: For 45" wide fabric:

Sizes S, M, L: 2 7/8 yards
Sizes XL, 2XL: 3 yards
For all sizes: 1/2 yard of contrasting fabric for bias binding
OPTIONAL: 1" bias tape maker

VIEW B: For 60" wide fabric:

Sizes S: 1 3/4 yards
Sizes M: 1 7/8 yards
Sizes L: 2 3/8 yards
Sizes XL, 2XL: 2 1/2 yards
For all sizes: 1/2 yard of contrasting fabric for bias binding
OPTIONAL: 1" bias tape maker



View A

View B

Fabrics featured are Hot Blossom by Josephine Kimberling for Robert Kaufman Fabrics.