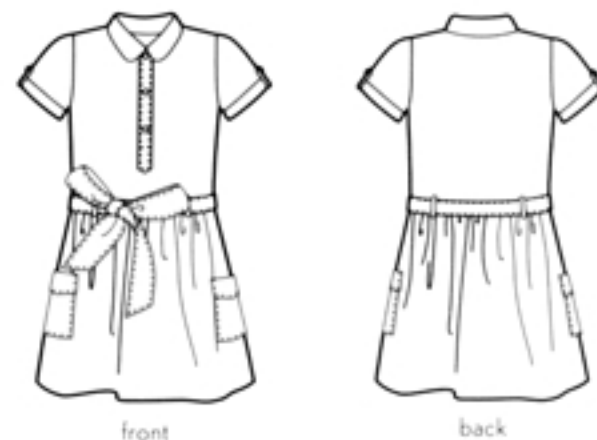


Girl's dress. Shirtwaist dress features rounded collar and front placket detail. View A includes short sleeves with folded cuff and sleeve tab, slightly dropped waist, patch pockets, and self sash with belt loops. View B features long-sleeves with folded cuffs, A-line shaping, and gathered bias-trimmed patch pockets.

SUGGESTED FABRICS: Light- to medium-weight woven fabrics like quilting cottons, broadcloth, lawn, shirtings, poplin, silk taffeta or dupioni, and linen. **NOTIONS:** Thread, lightweight interfacing. VIEW A - Seven 3/8" - 1/2" buttons. VIEW B - Three 3/8" - 1/2" buttons.

VIEW A



front

back

FABRIC GUIDE (fabric width: 44" - 45")

SIZE	6-12 M	12-18 M	18-24 M	2T	3T
Dress, view A	1 1/2 yards	1 1/2 yards	1 5/8 yards	1 3/4 yards	1 7/8 yards
Dress, view B	1 1/4 yards	1 1/3 yards	1 1/2 yards	1 1/2 yards	1 1/2 yards

VIEW B



front

back

FINISHED MEASUREMENTS

SIZE	6-12 M	12-18 M	18-24 M	2T	3T
Chest, both views	20 1/2"	21 1/2"	22 1/2"	23 1/2"	24 1/2"
Length*, view A	19"	20 1/4"	21 1/2"	22 1/2"	24"
Short sleeve**, view A	7 1/2"	8"	8 1/2"	9"	9 1/2"
Length*, view B	16 3/4"	18"	19"	20 1/4"	21 1/2"
Long sleeve**, view B	14"	15"	16"	17"	18"

* from high point of shoulder

** from center back

This pattern is for private use only. The images, layout, design and other aspects of this pattern are copyright © Liesl + Co., Inc. 2009. If you wish to make and sell items from this pattern, please contact us for terms. Otherwise, no part of this design or pattern may be reproduced in any form. **PRINTED IN THE USA**

OS012JR1



7 05105 62923 0



OLIVER + S IS PART OF LIESL + CO.
NEW YORK NY

www.oliverands.com