

# oliver + s

## BIRTHDAY PARTY DRESS PATTERN

**SIZES: 4, 5, 6, 7 + 8**

DIFFICULTY:    

**\$15.95**

Sleeveless A-line dress has three box pleats at center front with options for button tab (view A) or ties (view B). Buttons at back, and our signature hem facing.

**SUGGESTED FABRICS:** Light- to medium-weight woven fabrics like quilting cottons, broadcloth, silk dupioni, linen, poplin, and seersucker. **NOTIONS:** Thread, one 1/2"-3/4" button (view A), optional 2 yards of 1"-wide ribbon (view B), five 3/8"-1/2" buttons, light-weight fusible interfacing.

### FABRIC GUIDE (fabric width: 44" - 45")

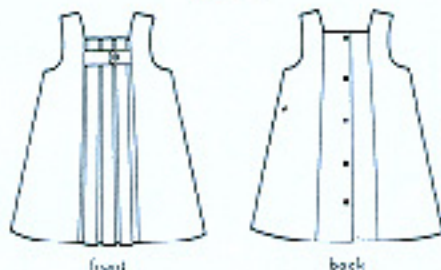
SIZE	4	5	6	7	8
Dress Fabric, Main	1 1/2 yards	1 1/2 yards	1 2/3 yards	2 yards	2 yards
Dress Trim, view A or view B with ribbons for ties	1/3 yard	1/3 yard	1/3 yard	1/3 yard	1/3 yard
Dress Trim Fabric, view B with ties	2/3 yard	2/3 yard	2/3 yard	2/3 yard	2/3 yard

### FINISHED MEASUREMENTS

SIZE	4	5	6	7	8
Length *	22 5/8"	24 1/4"	25 7/8"	28"	29 1/2"
Chest all around (closed)	25"	26"	27"	28"	29"

\* from high point of shoulder

VIEW A



VIEW B

