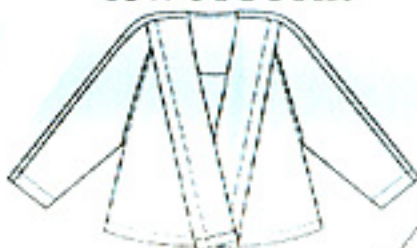
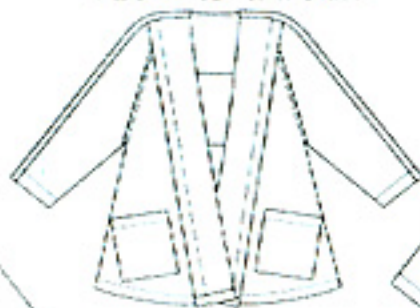


View A Front

View B Front



View A Back



View B Back

**Haiku Two:** Very loose-fitting, unlined jacket has extended shoulders and long two-piece sleeves. Back yoke and back sleeve are one piece with topstitching detail. Front folded lapel drops from shoulder seam to hem (wrong side of fabric shows). View A is hip length. View B is below hip length with angled patch pockets.

**Fabric Suggestions:** Med. to Heavy wt. Linen, Raw Silk, Handwovens, Wool Double Knit, Textured Wool, Gauze, Ethnic Cotton  
Wrong side of fabric shows on lapel.

**Notions:** 1 yard Interfacing, Thread.

### Fabric Requirements:

#### View A

45": 3 yards all sizes

60": 2 5/8 yards all sizes

#### View B

45": 4 yards all sizes

60": 2 7/8 yards all sizes

## SIZE MEASUREMENTS

	(XS)	(SM)	(MED)	(LG)	(XL)	(XXL)
SIZE	6	8 10	12 14	16 18	20	22
Bust	31	32 1/2 34	36 38	40 42	44	46
Waist	24 1/2	25 1/2 26 1/2	27 1/2 29	31 33	35	37
Hip	34	35 36	37 39 1/2	41 1/2 43 1/2	45 1/2	47 1/2

### LENGTH Finished back from base of neck

View A 21 1/2 21 3/4 22 22 1/4 22 3/4 23 1/4

View B 31 1/4" all sizes